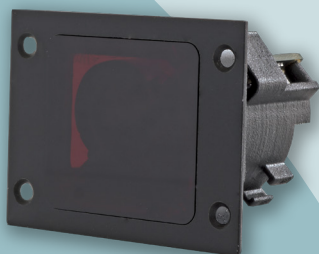




LRF 905 SR



DESCRIPTION

The LRF 905 SR is an OEM mini Laser Rangefinder designed to fit UAVs and UGVs electro-optical applications.

Ultra-compact design, lightweight and high accuracy are all assets which make LRF 905 SR one of the best performing mini Laser Rangefinders of the market.

Designed to be easily integrated in the payload or directly in the machine, it is the ideal system for low-level altimetry, flight position control and short-range obstacle detection applications.

DATASHEET

 Optical specifications

Characteristics	Min.	Typ.	Max.	Units	Comments
Wavelength	-	905	-	nm	
Detection range	0,2	-	250	m	On special targets e.g. cube corner reflectors (*)
	0,2	-	50	m	On targets with 30% reflectivity (*)
Accuracy	-	5	-	cm	@ +/- 2 σ
Resolution	-	0.1	-	cm	
Divergence	-	3 x 1	-	mrad	
Spot size	-	10 x 3	-	cm	@ 30m
	-	30 x 10	-	cm	@ 100m
Measurement rate	-	20	-	Hz	
Eye safety	-	-	-	-	Class 1, EN60825-1 standard v 2007

 Electrical specifications

Characteristics	Min.	Typ.	Max.	Units	Comments
Communication interfaces	-	-	-	-	RS 232 & RS 422
Operating modes	-	-	-	-	Stand-by & Firing (**)
Measurement modes	-	-	-	-	Single shot, burst & continuous
Connexion type	-	-	-	-	6/8 electrical wires
Consumption	9	-	16	V	
	-	-	1.5	W	Firing mode
	-	1	-	W	Stand-by mode

 Mechanical and environmental specifications

Characteristics	Min.	Typ.	Max.	Units	Comments
Architecture	-	-	-	-	OEM module
Dimensions (W x H x D)	-	55 x 45 x 42,5	-	mm	Width x Height x Depth
Sealing	-	-	-	-	IP64 on front face
Weight	-	40	-	g	
Operating temperature	0	-	50	°C	
Humidity	10	-	90	%	No condensing

 Standards

Characteristics	Min.	Typ.	Max.	Units	Comments
Shocks and vibrations	-	-	-	-	ISO 9022-3
EMC	-	-	-	-	EN 61326-1

(*) depends on the visibility
(**) sleep mode not available